

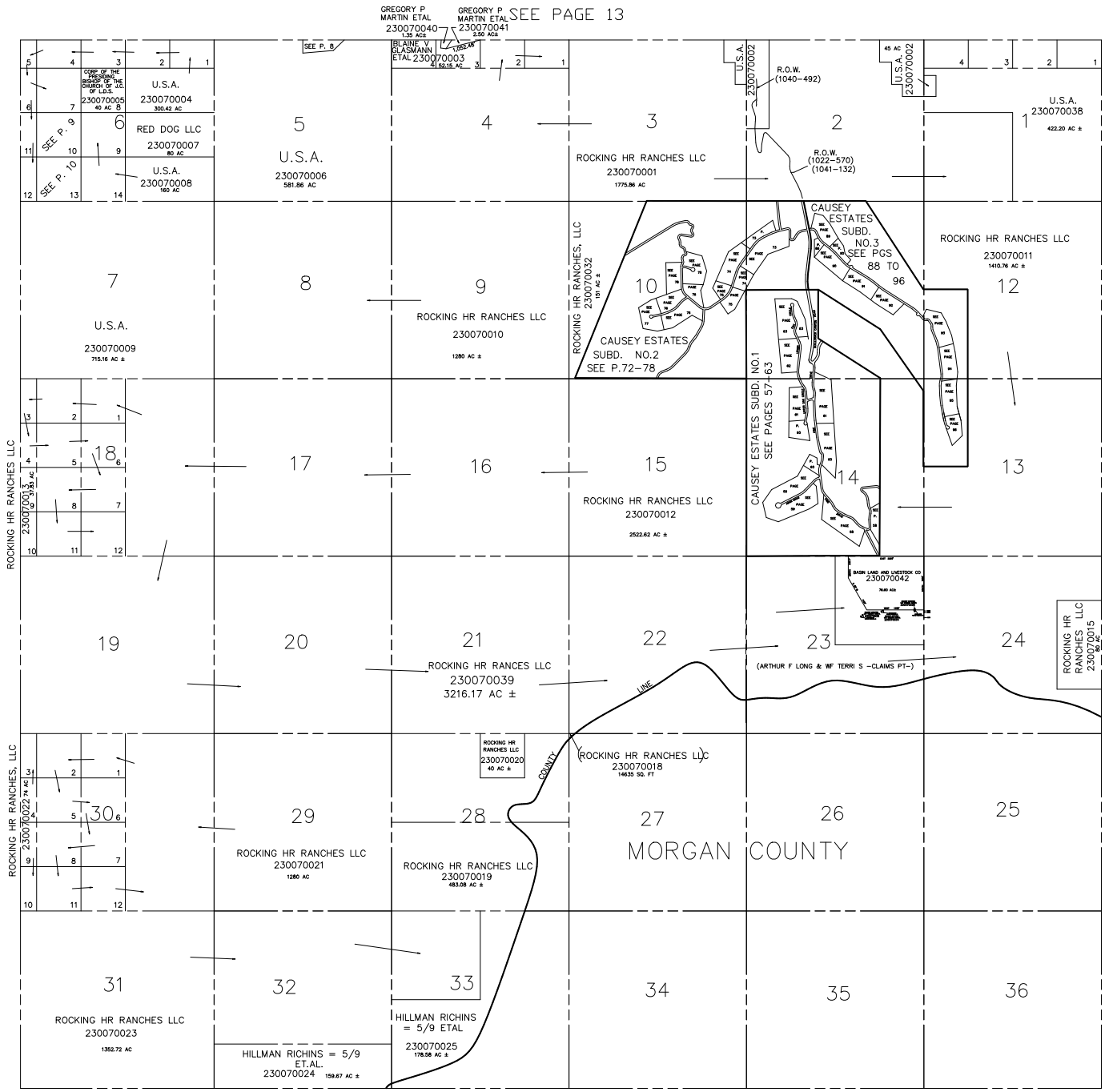
T.6N., R.3E., S.L.B. & M.  
 IN WEBER COUNTY  
 SCALE 1" = 2400'

TAXING UNIT: 58

SEE PAGE 13

SEE BOOK 21  
 SEE PAGE 17  
 SEE PAGE 14  
 SEE PAGE 1  
 SEE PAGE 36  
 SEE PAGE 44

SEE PAGE 11



NOTE: WEBER/MORGAN ASSESSMENT LINE  
 CHANGED TO COUNTY LINE - 1998